

SYDNEY DESIGN COLLECTIVE

Collaborative Landscape Architecture

14-18 Phillips Street, St Mary's | 01 DEVELOPMENT APPLICATION

REV J_25/05/2020



SYDNEY DESIGN COLLECTIVE

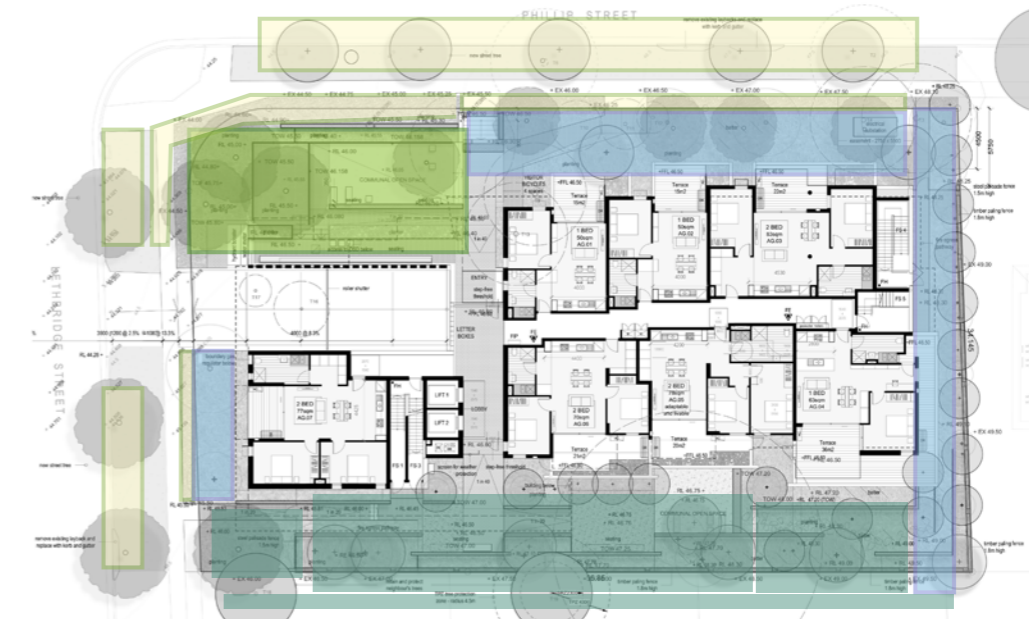
Client: LAHC/ GROWTH BUILT

Architect: MWA

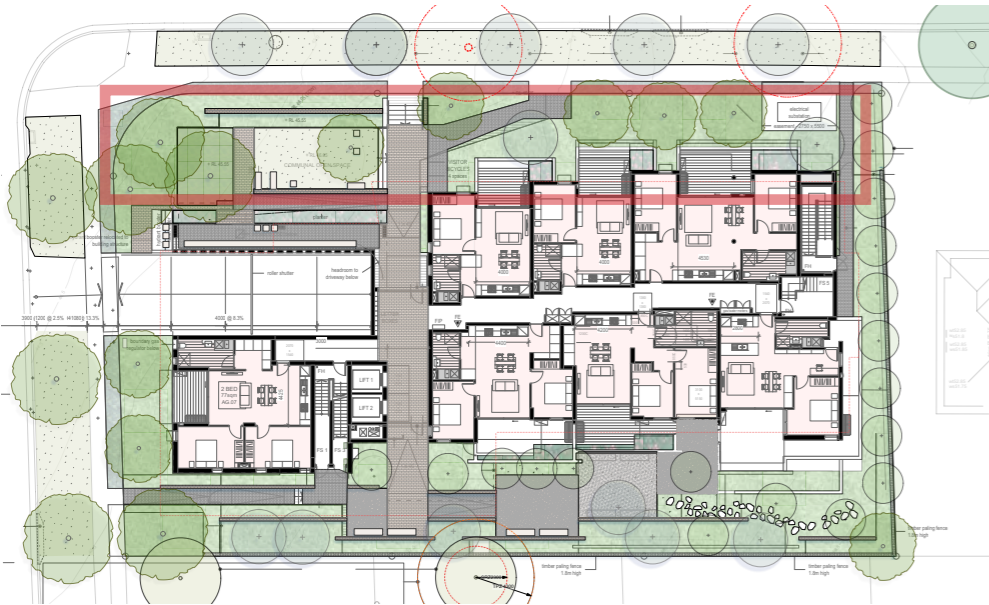


Overall Objectives and principles

- Opportunities to engage with other people.
- A reconnect ion/ maintaining connection with nature.
- Social and mental sustainability.
- Landscape with differing characters, choices, microclimates and year-round comfort.
- Connection with the public.
- All-access to all facilities.
- Playfulness and joy.
- Flexibility and maintainability.
- Working with the topography changes in level to create interest.
- Greening of the adjacent streetscape frontages.
- Landscape and architecture integrate and work closely together to create a high quality garden environment from street to building.
- New tree planting exceeds what the site currently supports, with trees selected to contribute to habitat, shade, biodiversity and urban greening/
- Landscape spaces complement the proposed built form.
- Deep soil allows large trees to be planted that are proportionate to the scale of the building and maintain a continuous green canopy at maturity.

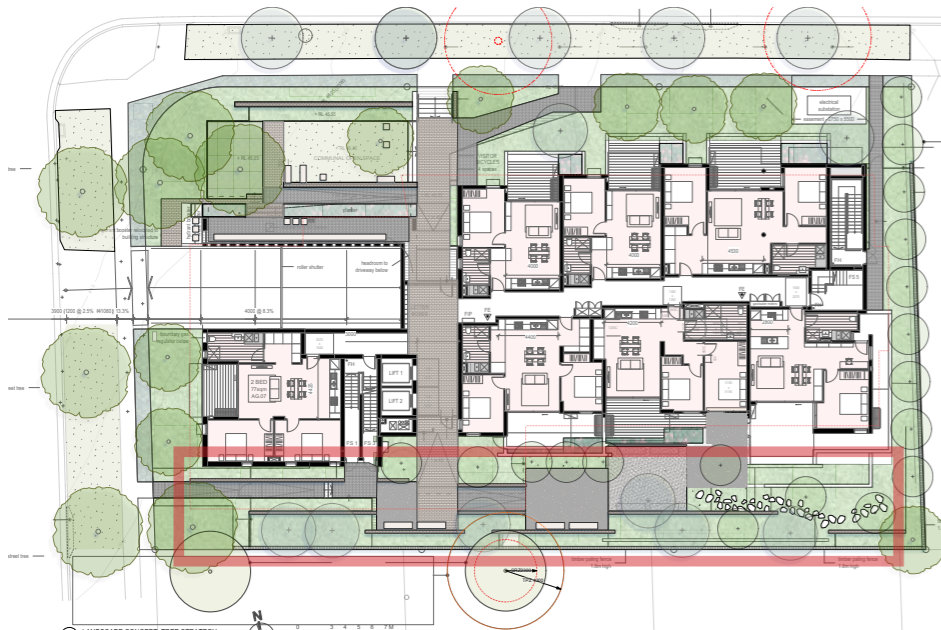


- Northern Loggia and Garden
- Street Address, Privacy and Green Relief
- Shaded Communal garden (Southern)
- Streetscape and Urban Greening



Northern Loggia and Garden

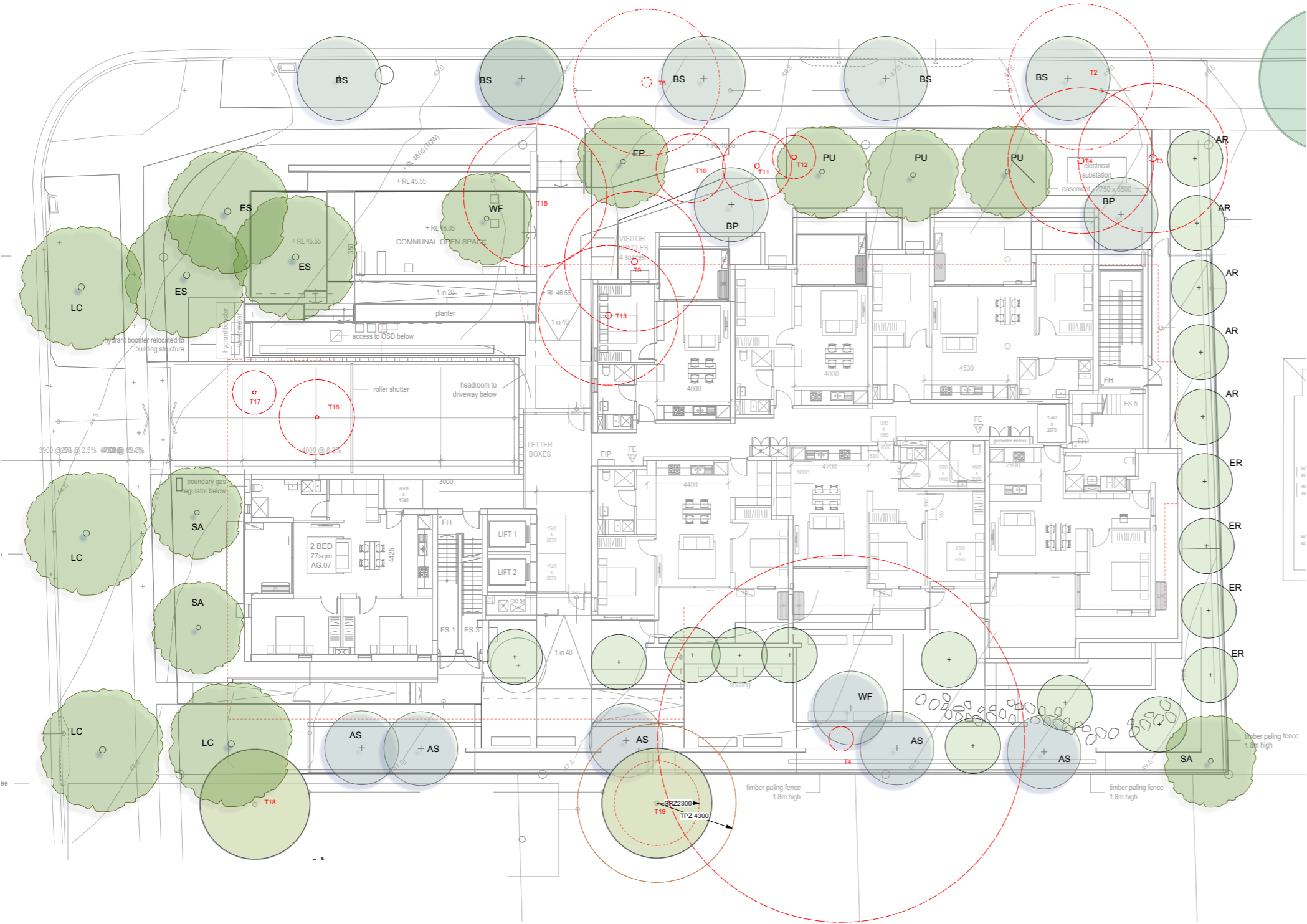
- The principal community and ‘civic’ space.
- Connection to the public by overlooking the street.
- Views over the street and the vista to the Blue mountains.
- A larger open space, fulsome with a building-wide community connection.
- Stepped terraces to create different spaces, interest and be an interesting and integrated landscape connection with the street.
- Opportunities to directly engage with other tenants or simple overlook and watch.
- Opportunities to garden or simply enjoy.



Tree Shaded Communal Garden

- Linear communal space (parklet) with several spaces with different facilities and function.
- Supplement public facilities in
- Small spaces within a large extent of greenery and trees.
- Provision of tree shade, a good summer retreat.
- Ensuring adequate privacy for tenants.
- Provision of an all-ages playful landscape.





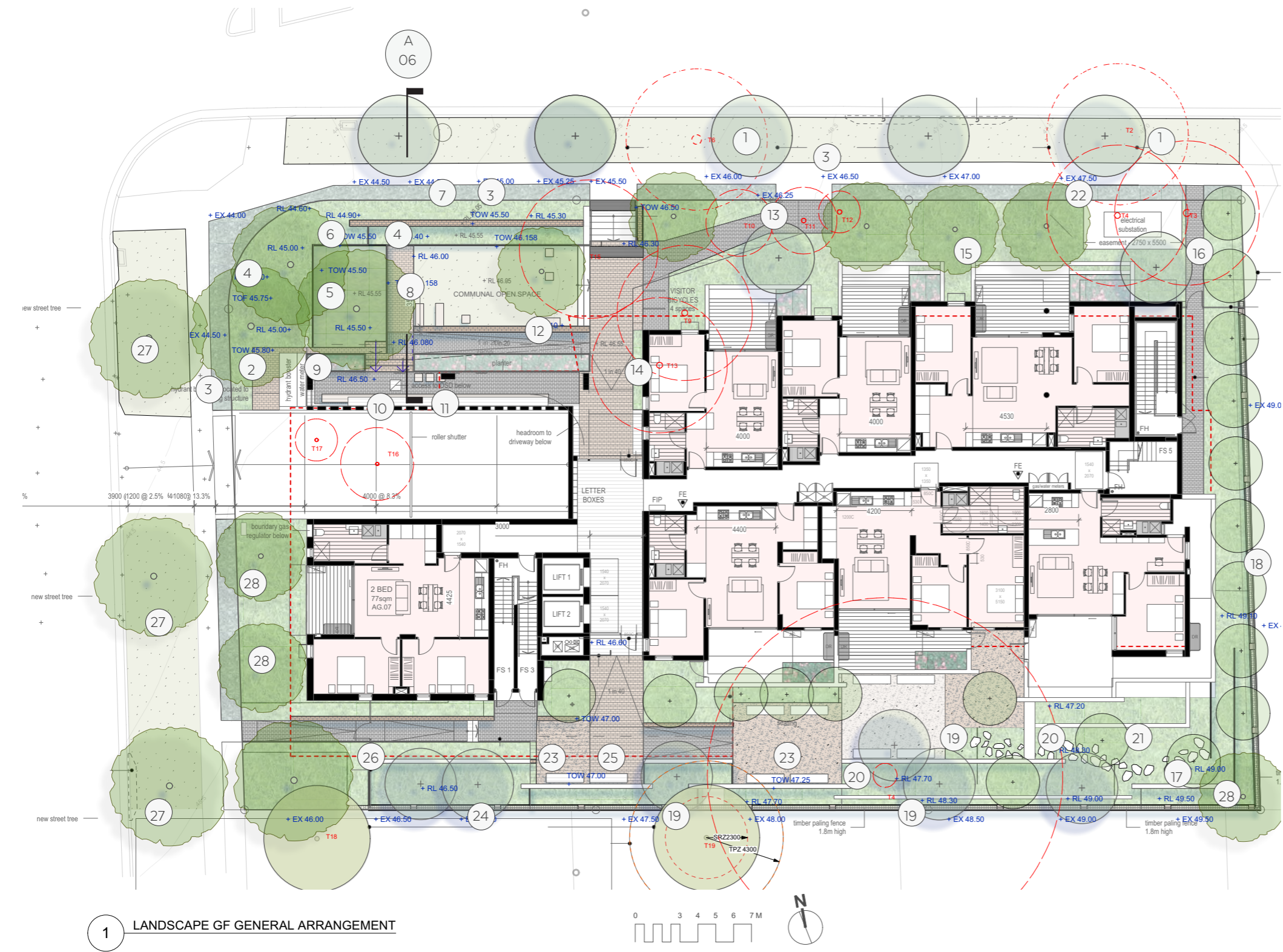
PLAN 1:250 @ A3

Tree Canopy and Streetscape Urban Greening

- Tree selection based on sound principles of provision of shade, adaptability, local provenance where possible, biodiversity and habitat potential and input from Council.
- Phillip Street Garden to be protected from the western sun with attractive Brushbox which also provide quality shade. Kurrajong can be used as a surrogate street tree within landscape setback.
- Shade garden and boundaries mixed species of adaptable small rainforest species such as Acmena smithii, and screening plants.
- Potential for urban greening of Lethbridge Street with planting of large local Eucalypts such as Forest Red Gum, Ironbark . These are local native species that can take advantage of the very generous verge.
- Trees retained and protected on southern boundary in neighbouring property. Note instructions referenced in the arborists report.
- Existing Brushbox underpowerlines on Phillip Street removed. Replaced with new Old Man Banksia.
- New Brushbox street trees on Lethbridge Street, to continue the existing planted to the south along the street.

NOTE:

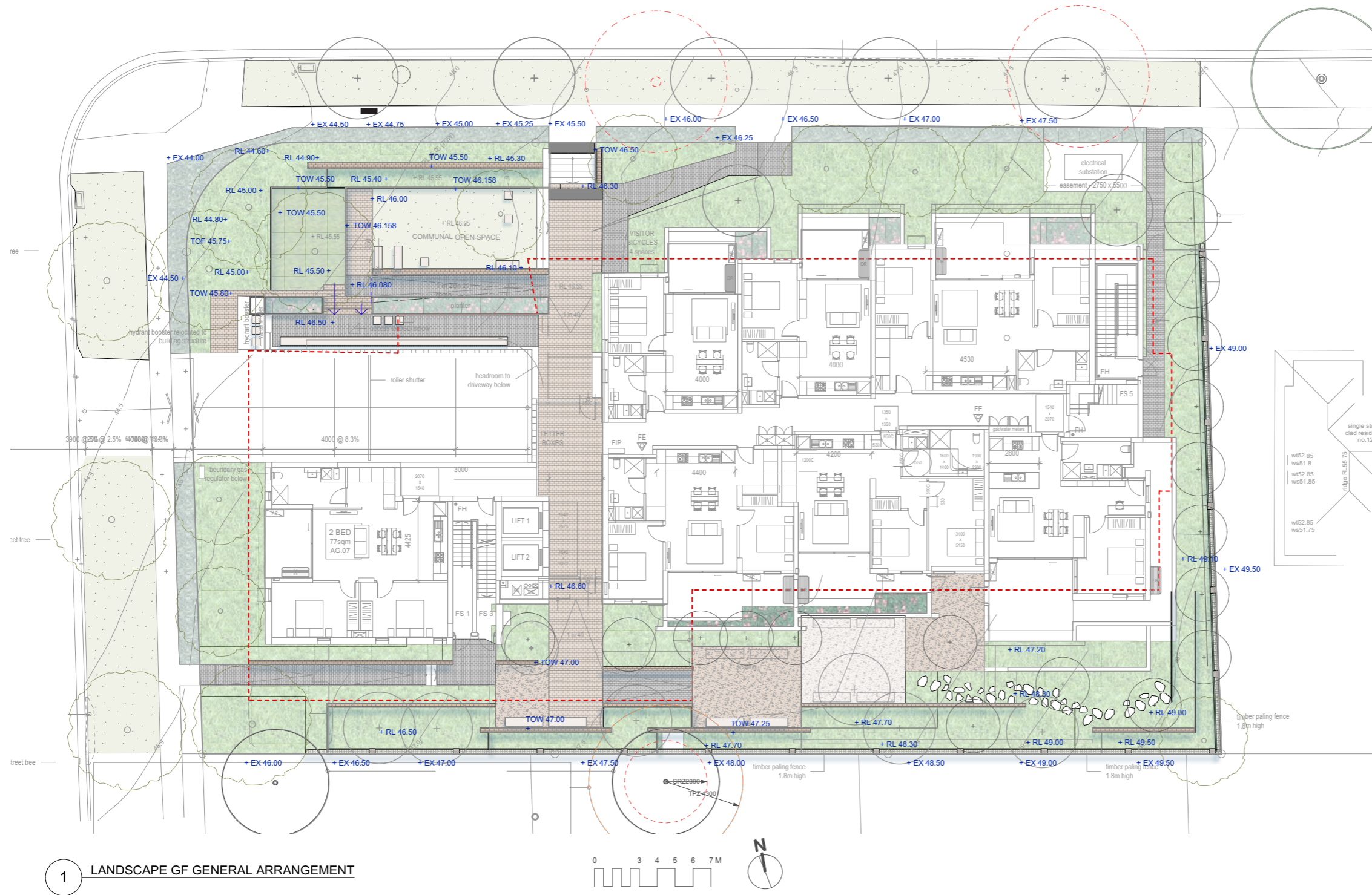
- Refer to arborists report for more detail on tree retention, protection and removal. Tree numbers shown to cross reference to arborists plans and schedules.
- Refer to tree schedule for tree annotations identification.



Legend

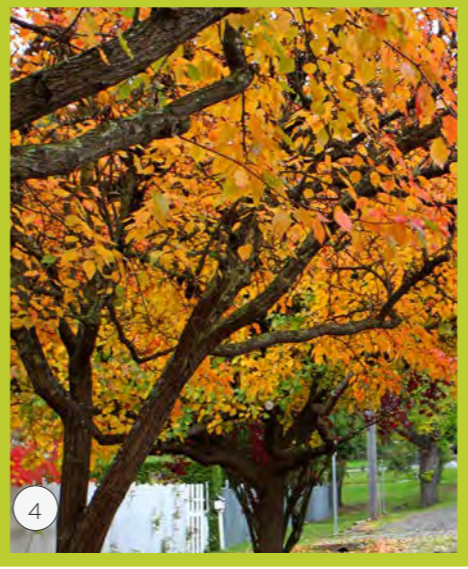
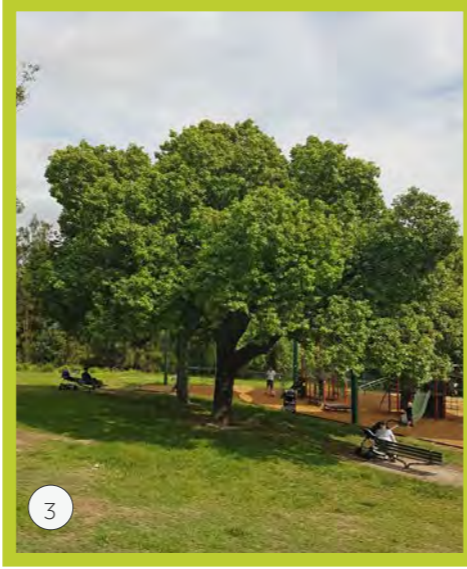
- Existing Brushbox beneath powerlines removed and replaced with new Old Man Banksia
- Landscape planting around fire hydrants.
- New low native planting installed between footpath and property boundary.
- Levels within setback rise towards face of building and low landscape terraces to reduce visual impact and improve Lethbridge Street, streetscape connection.
- Garden terrace planted with native shrubs and trees beneath garden loggia. Limited access except for maintenance.
- Low brick retaining wall parallel with Phillip Street to increase planting and reduce impact of all access landscape terrace. Extent and height of planting will clearly prohibit any access.
- Native low shrub planting within landscape setback and create a more planted connection with Phillip Street.
- Accessible grassed community park with 1:20 equitable ramp. All levels to have handrail only, balustrades are not required. Ramps and paths will have a kerb upstand where required. Seating is shown nominally.
- Stepped garden bed between garden terrace and loggia space.
- Loggia space overlooking gardens and with views to the Blue Mountains.
- Low plinth seats in loggia space with options of adding planting in fixed pots.
- Low brick walls between entry and the accessible garden terrace below.
- On grade all access entry.
- Garden below building facade to grow a living wall of climbing fig.
- Deep soil planting setback on Phillip Street for privacy and generosity of landscape, including allowance for large trees.
- Porous paving fire escape to Phillip Street.
- Informal maintenance egress to landscape zone at the rear of the property.
- Garden setback to allow narrow screen trees along eastern boundary. Trees include Acmena Redhead and Blueberry Ash.
- Smaller low maintenance trees within southern deep soil zone.
- Low brick terraces to ameliorate levels form rear boundary to building RL. Terraces to be heavily landscaped with gardens to be overlooked and looked onto. Maintenance access to be provided.
- No tenant access to garden to maintain privacy for terraces.
- Existing trees to be removed shown in dashed red. Refer to arborists report for more detail.
- Porous gravel courtyard space adjacent to tree shaded garden, and all access seating.
- Trees along southern boundary for screening and privacy.
- Breakout courtyard space adjacent to lobby.
- Ramped egress to Lethbridge Street.
- Lophostemon confertus planted in street verge.
- Syzigium australe screen trees,

NOTE: REFER TO PLAN LA06 FOR TREE TYPES ANNOTATED



PLAN 1:250 @ A3

Refer to landscape plan LA05 for annotation

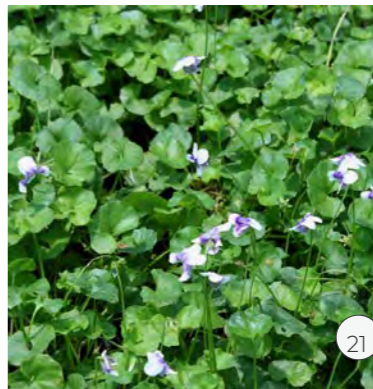
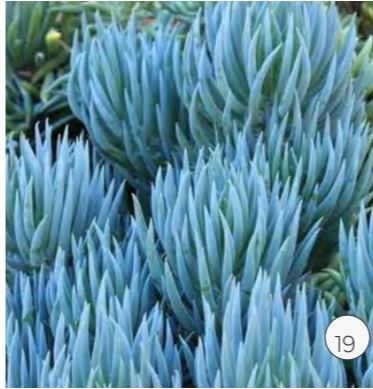
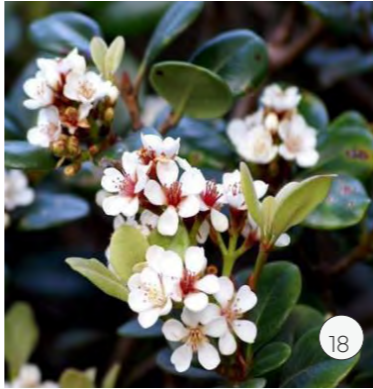
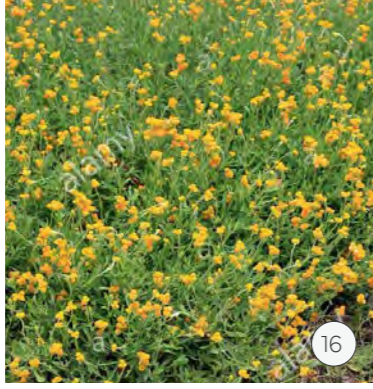
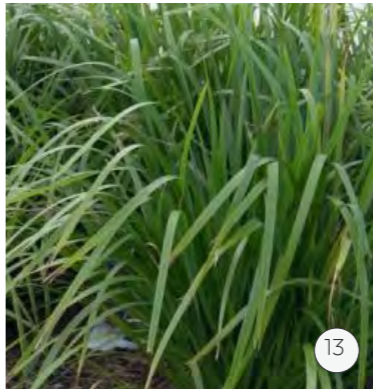
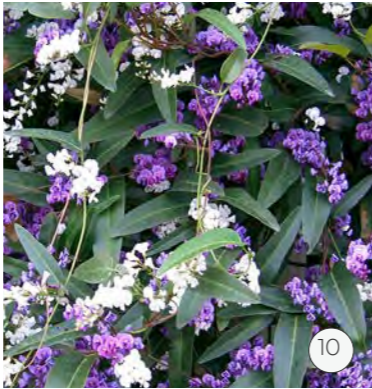
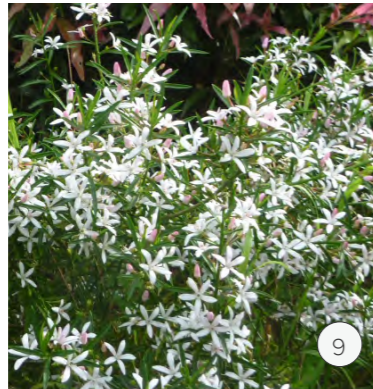
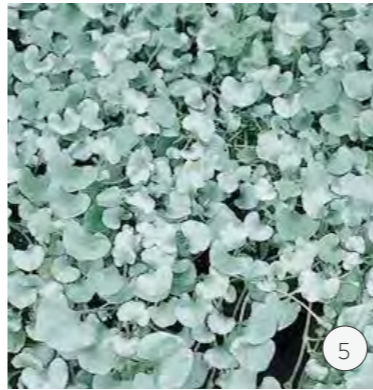
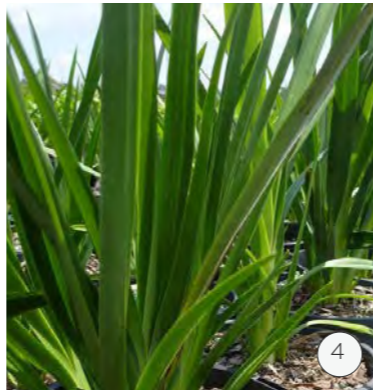
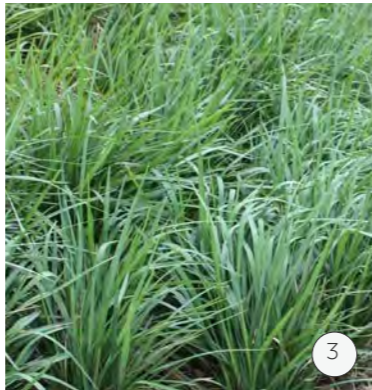
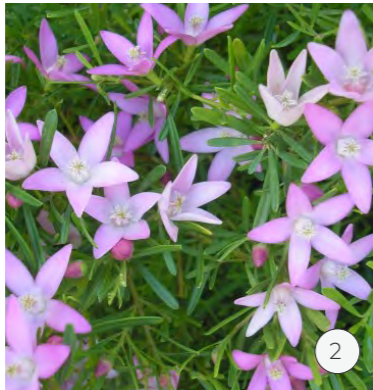


PLANT SCHEDULE 14-18 Phillips Street ST MARYS						
Tree						
CODE	BOTANICAL NAME	COMMON NAME	POT SIZE	HEIGHT AT MATURITY	QUANTITY	COMMENTS
AR/AS	<i>Acmena smithii</i> Redhead	Lilly Pilli	100L	as shown	8	Indigenous
BP	<i>Brachychiton populneus</i>	Kurrajong	100L	as shown	3	Indigenous
BS	<i>Banksia serrata</i>	Old Man Banksia	100L	as shown	5	Indigenous
ES	<i>Eucalyptus schelophylla</i>	Scribbly Gum	100L	20M	3	Indigenous canopy tree
EE	<i>Elaeocarpus reticulatus</i>	Blueberry Ash	45L	7m	4	Indigenous screen tree
EP	<i>Eucalyptus punctata</i>	Grey Gum	100L	25M	2	Indigenous canopy tree
LC	<i>Lophostemon conferta</i>	Brushbox	200L	15M	5	Canopy tree
PU	<i>Pyrus ussuriensis</i>	Manchurian Pear	200L	as shown		
SA	<i>Syzigium australe</i>	Magenta Cherry	100L	9M	3	Canopy tree
WF	<i>Waterhousia floribunda</i>	Weeping Satinash	100L	11M	2	Canopy tree

- 1. Eucalyptus punctata and E schlerophylla canopy trees for western corner of site for shading and protection from the western sun.
- 2. Lophostemon confertus (Brushbox) for western shade of southern garden and as street trees in Lethbridge Street.
- 3. Brachychiton populneus (Kurrajong) for deep soil frontage.
- 4. Deciduous Pyrus ussuriensis used along northern frontage.
- 5. Syzigium leuhmanii (Small leaved Lily Pilly) as a screening small tree
- 6. Banksia serrata (Old Man Banksia) as a small screening and habitat tree and under powerlines in Phillip Street..
- 7. Small screening trees Tristania Laurina Luscious.
- 8. Narrow Screen Tree Banksia integrifolia Sentinel.
- 9. Waterhousia floribunda feature shade tree.

NOTE: REFER TO PLAN LA04 FOR TREE LOCATIONS REFERENCED IN SCHEDULE ABOVE.

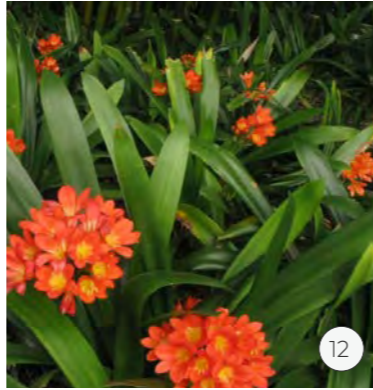
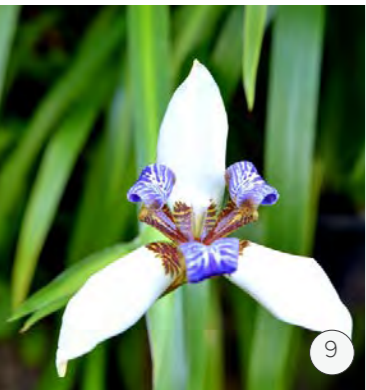
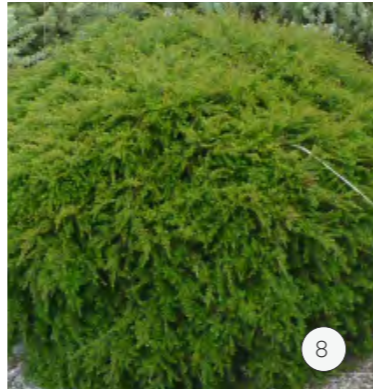
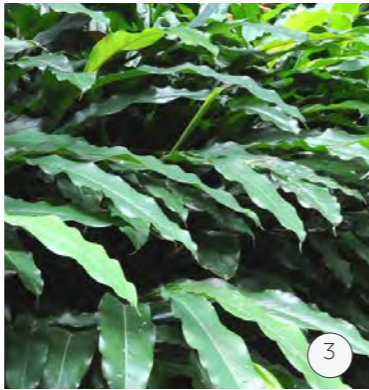
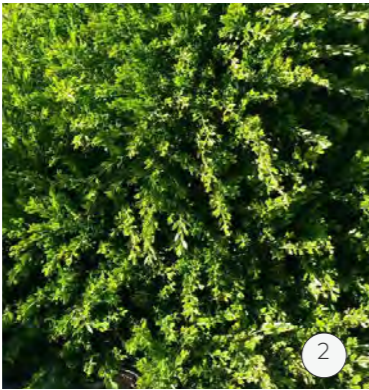
Planting | Shrubs and understorey- Northern and Western Landscape



1. Correa baeurlenii
2. Crowea exaltata
3. Dianella caerulea
4. Dianella longifolia *
5. Dichondra 'Silver Falls'
6. Dichondra 'repens' *
7. Dodonea triquetra *
8. Doryanthes excelsa
9. Eriostemon myoporoides 'Profusion'
10. Hardenbergia spp.*
11. Goodenia hederaceae *
12. Limonium perezii
13. Lomandra filiformis *
14. Neomarica gracillis

15. Ozothamnus diosmifolius 'Radiance'
16. Philodendron 'Xanadu'
17. Prostanthera cuneata *
18. Rhabdolepis 'Snow maiden'
19. Senecio serpens
20. Trachelospermum jasminoides

* Locally Indigenous to Shale Woodland Forest



1. Acacia 'Limelight'
 2. Acacia 'Honeybun'
 3. Alpinia nutans
 4. Acanthus mollis
 5. Adenanthos sericeus
 6. Arthropodium cirratum
 7. Asplenium australasicum
 8. Babingtonia virgata 'Howie's Sweet Midget'
 9. Neomerica gracillus
 10. Blechnum 'Silver Lady'
 11. Chrysocephalum apiculatum
 12. Clivia miniata
 13. Ajuga australis *
 14. Viola hederacea *
 15. Wahlenbergia gracilis *
- * Locally Indigenous to Shale Woodland Forest

BOTANICAL NAME	COMMON NAME	MATURE SIZE	POT SIZE
SHRUBS AND GROUNDCOVERS			
Acacia 'Honeybun'	Honey Bun Wattle	1.5 x1.5	300mm
Acacia 'Limelight'	Dwarf River Wattle	1 x 1.2	200mm
Alpinia nutans	Cardamom	1 x 1.2	200mm
Acanthus mollis	Oyster plant	0.7 x 0.7	200mm
Adenanthos sericeus	Woolly Bush	2 x 1	300mm
Arthropodium cirratum	Renga renga Lily	0.7 x 0.5	200mm
Asplenium australasicum	Birds nest fern	1 x 1	200mm
Babingtonia virgata 'Howie's Sweet Midget'	Heath Myrtle	1 x 1	200mm
Banksia 'Pygmy possum'	Prostrate Banksia	0.5 x 2.5	200mm
Blechnum gibbum 'Silver Lady'	Silver Lady Fern	0.7 x 0.7	200mm
Blechnum nudum	Fishbone water fern	0.7 x 0.7	200mm
Chrysocephalum apiculatum	Yellow Buttons	0.6 x 0.9	200mm
Clivia miniata	Clivia	0.7 x 0.7	200mm
Correa baeuerlenii	Chefs Cap Correa	1.5 x 1.5	200mm
Crowea exalata 'Edna Walling Crowea'	Crowea	0.45 x 0.8	200mm
Dianella caerulea	Flax Lily	0.75 x 0.75	200mm
Dianella longifolia	Flax Lily	0.8 x 0.5	200mm
Dichondra 'Silver Falls'	Silver Falls	0.2 x 1.5	200mm
Dichondra repens	Kidney weed	0.3 x 1	200mm
Doodia aspera	Prickly Rasp Fern	0.5 x 0.5	200mm
Doryanthes excelsa	Gymea lily	1.5 x 1.5	
Eriostemon myoporoides 'Profusion'	Wax flower	0.8 x 0.8	200mm
Hardenbergia violacea	Purple coral pea	0.4 x 3	200mm
Helichrysum petiolare	Licorice plant	0.6 x 1.5	200mm
Limonium perezii	Sea lavender	0.6 x 0.6	200mm
Lomandra longifolia	Mat Rush	1 x 1	200mm
Neomarica gracillis	Walking iris	0.6 x 0.9	200mm
Ozothamnus diosmifolius 'Radiance'	Rice Flower	1.5 x 1	300mm
Philodendron 'Xanadu'	Xanadu	0.75 x 0.75	200mm
Prostanthera cuneata	Alpine mint bush	0.5 x 0.5	200mm
Rhaphiolepis 'Snow maiden'	Indian Hawthorn	0.75 x 0.5	300mm
Senecio serpens	Blue chalk plant	0.3 x 1	200mm
Trachelospermum jasminoides	Star jasmine	5 x 1	200mm
Viola hederacea	Native violet	0.2 x 2	200mm